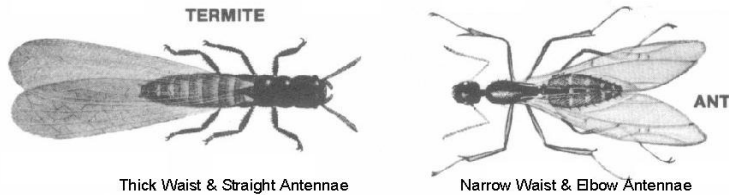


Termites and Bed Bugs

Termites



How to tell ANTS from TERMITES



Termites are social insects that live in concealed nests as ants do, with at least four main castes. The castes include winged males and females known as “swarmers.” Workers are white soft bodied, ant-like insects without wings. Soldiers resemble workers with big heads and large brown-tipped jaws. Supplementary reproductive castes appear to be unusually large workers or have undeveloped wings. Numerous intercaste forms may also appear.

Bed Bugs



Bedbugs (or bed bugs) are small, elusive, and parasitic insects of the family Cimicidae. They live strictly by feeding on the blood of humans and other warm-blooded animals. The name 'bed bug' is derived from the insect's preferred habitat infesting houses and especially beds or other common areas where people may sleep. Bedbugs, though not strictly nocturnal, are mainly active at night and are capable of feeding unnoticed on their hosts. Largely eradicated as pests in the United States in the early 1940s, bedbugs have been resurgent in the past decade to near epidemic proportions.